

St Moritz Chalet 7 bedrooms luxuriously appointed

Switzerland, Silvaplana

chalet - REF: TGS-A732



N° Bedrooms: 7

Fireplace

N° Bathrooms: 7

Sauna

N° People: 12

Dishwasher

Parking

TV

M² built: 500 m²

Washing machine

Terrace

Store Room

N° Floors: 2

Wifi

Activities in resort

Skiing/Snowboarding
Tennis

Cycling

Cross country skiing

Hiking

Mountain-Biking

Riding

Sailing

Surfing

St. Moritz Chalet 7 bedrooms (14+1 beds)

Maximum occupancy: 12 guests

Living area: approximately 500sqf.

Main House

Top Floor

Bedroom: Twin or super-king bedroom with en-suite bathroom

Bedroom: Twin or super-king bedroom with private show room

There is an additional children's alcove above the cupboard.

Bedroom: Twin or super-king bedroom with en-suite bathroom

First Floor

Bedroom: Super-king bedroom with en-suite bathroom (with separate rainshower)

Ground Floor

Bedroom: Bunk bedroom with en-suite shower room

Annex

Ground Floor

Bedroom: Super-king bedroom with shared bathroom

Bedroom: Super-king bedroom with shared bathroom

Features

Sauna/ Steam Room and Gym

LCD TV screens and i-pod docks in bedrooms

PC, printer, fax and chalet wide wi-fi system

Home cinema with DVD collection, Sky Astra and Nintendo Wii console

Sledges, games, toys and books for all ages

Ski Room with heated boot racks

Infant cots, highchairs, sterilizers and cross country pushchair

Down (or hypo-allergenic) duvets and choice of pilows

Personal bathrobes

Bath products and hairdryers in every bathroom

Fresh flowers

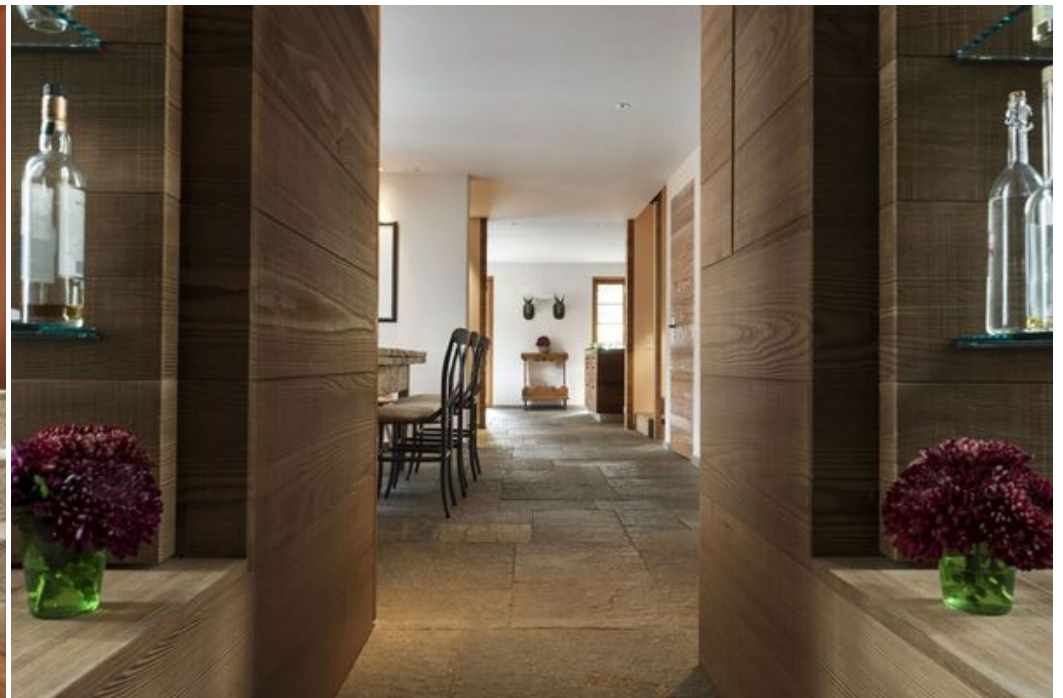
St. Moritz Chalet 7 bedrooms are luxuriously appointed, including flat-screen TVs and iPod stations. Superba mattresses are topped with down duvets, a choice of pillows and soft Egyptian cotton sheets. Bathrooms have been laid out for pure indulgence with power showers and extra deep bathtubs inviting you to relax sore muscles with exclusive Miller Harris beauty products.

The architecture is modern, yet sumptuous and elegant. Meticulous attention has been paid to every detail. The interior is of the highest quality using ETRO fabrics throughout. Deep, comfortable sofas and local antiques mixed with a collection of contemporary art sit against a backdrop of old wood and granite.

St. Moritz Chalet offers plenty of room to relax or entertain. Both living rooms have large wood-burning, open fireplaces and offer stunning views of the Corvatsch mountain. The live-in kitchen seats 10 and the dining room up to 14. With bedrooms spread across separate parts of the house and a choice of rooms to retreat to, the chalet is an ideal retreat for an extended family or group of friends.

The guests can also exercise in a well-equipped gym or relax in the sauna/steam room. For the youngest members of the family there is a fully stocked playroom which also serves as a home cinema.





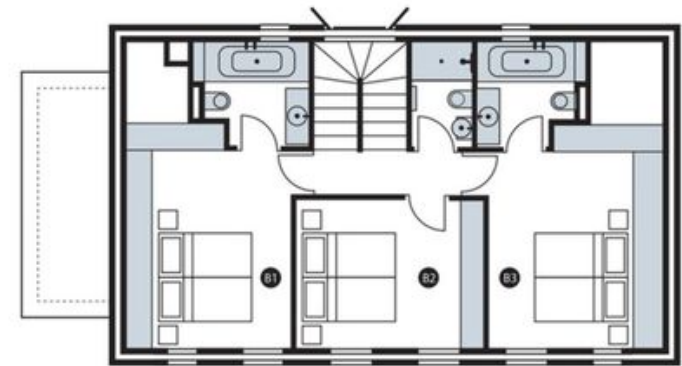












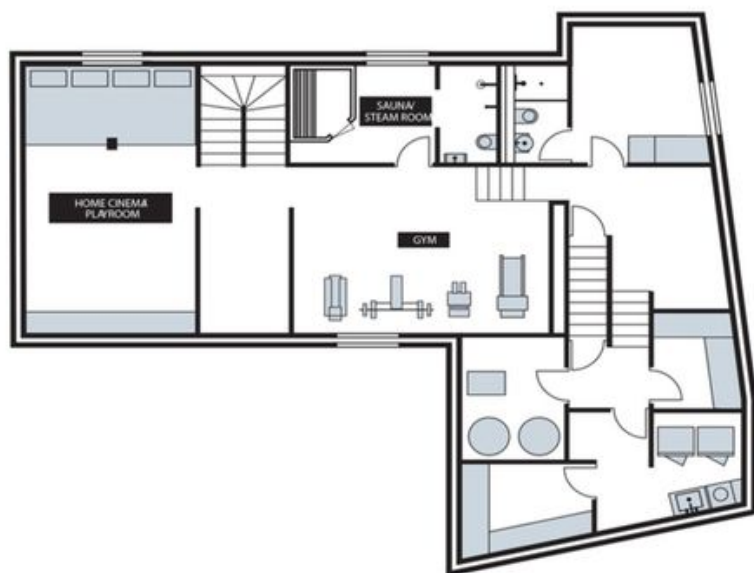
TOP FLOOR



FIRST FLOOR



GROUND FLOOR



LOWER GROUND FLOOR
