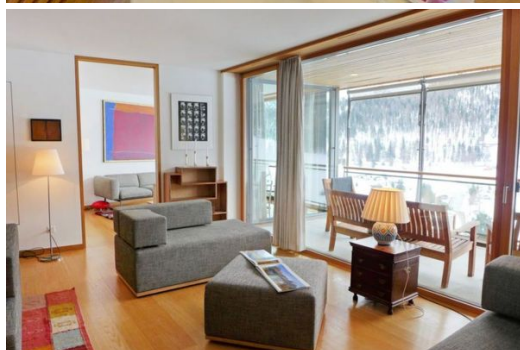


Apartment Duplex in Celerina

Switzerland, Celerina

Apartment - REF: TGS-A926



N° Bedrooms: 4

Wifi

N° Bathrooms: 4

Fireplace

N° People: 8

Dishwasher

Parking

TV

M² built: 240 m²

Washing machine

Terrace

Distance to ski lift: 500m

Exposure: South

N° Floors: 2

Activities in resort

Skiing/Snowboarding

Golf

Riding

Sailing

Surfing

Tennis

APARTMENT DUPLEX IN ST. MORITZ

Bright, luxurious and tasteful furnishings: large entrance hall. Large living/dining room with open-hearth fireplace, library and electric shutters. Exit to the balcony. Small living room with shower/WC, satellite TV, radio, DVD and electric shutters. 1 double bedroom with 1 double bed, bath/bidet/WC and electric shutters. Exit to the balcony, south facing position. 1 double bedroom with bath/bidet/WC and electric shutters. Large, open kitchen (oven, 4 ceramic glass hob hotplates, freezer, electric coffee machine) with dining table. Floor heating. Upper floor: gallery with electric shutters. Exit to the balcony, south facing position. 1 room with 1 bed, 1 pull-out bed, shower/WC and electric shutters. 1 room with 2 beds, bath/bidet/WC and electric shutters. Floor heating. 2 large balconies. Terrace furniture. Very beautiful view of the mountains, the garden and the resort. Facilities: washing machine, dryer, iron, hair dryer. Internet (WiFi). Garage space n 26. Please note: non-smokers only.

House/Residence

Celerina, 3 km from St. Moritz: Very luxurious residence. On the outskirts, in a quiet, sunny position on top of a hill, south-west facing position. For shared use: meadow. In the house: lift, storage room for bicycles, storage room for skis, central heating system. Room cleaning weekly (extra). Communal covered parking space n 26. Shop 1.2 km, restaurant 1.1 km, bar 1.1 km, bakery 1.1 km, café 1.1 km, bicycle rental 1 km, bus stop 10 m. Golf course (18 hole) 5 km, sports centre 1 km, gondola lift 1.1 km, ski school 1 km, ski-kindergarten 1 km, cross country ski track 2 km, children's playground 1.1 km. Well-known ski regions can easily be reached: Corviglia-Marguns 1 km. Well-known lakes can easily be reached: Statzersee 5 km. Please note: ski bus (free of charge).

Pool Ovaverva 3.1 km

View point Aussichtspunkt mit Liegestühlen 4.2 km

ski trail Saluver Talabfahrt 0.9 km

Ski-lift Celerina - Marguns 0.4 km

Bike shops ALPINE bike 0.3 km

Golf courts Kulm Golf St. Moritz 1.2 km

ice rink Eisarena Ludains 2.5 km

Beaches Strand 1.9 km

tennis courts Tennisplatz 0.5 km

Airport Engadin, (auch Flugplatz Samedan) 3.6 km

skiing region Celerina 0.5 km

Rental apartment St. Moritz

Apartment St. Moritz

Luxury Apartment St. Moritz



