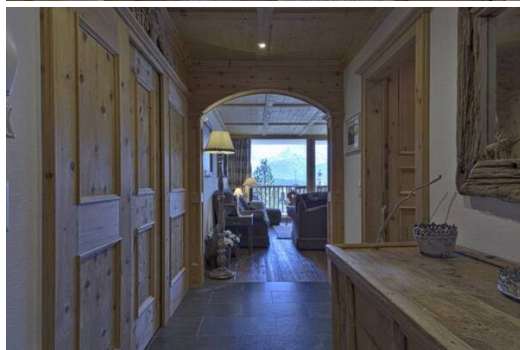


The building is located in the upper area of Samedan from wh

Switzerland, Samedan

Apartment - REF: TGS-A3470



| | | | | | | | |
|----------------|-----------------|----------------|------------------|------------------|------------|-----------|-----------------|
| N° Bedrooms: 3 | N° Bathrooms: 2 | N° People: 8 | Parking | M² built: 130 m² | Wifi | Fireplace | Garden View |
| Mountain view | Communal lift | Private lift | Air conditioning | BBQ | Dishwasher | TV | Washing machine |
| Store Room | Ski Room | Cinema/tv room | | | | | |

Activities in resort

| | | | | | |
|---------------------|---------|----------------------|--------|-----------------|--------|
| Skiing/Snowboarding | Cycling | Cross country skiing | Hiking | Mountain-Biking | Riding |
|---------------------|---------|----------------------|--------|-----------------|--------|

The building is located in the upper area of Samedan from which you have an exceptional view over the whole valley and the glaciers of the surroundings, including the Bernina group.

The house is located 500 meters from the center of Samedan and 800 meters from the station. St. Moritz is only 7 km away. Hiking trails start directly from the house.

A Garage, shared laundry and wi-fi are available to guests.

The building is located in the upper area of Samedan from which you have an exceptional view over the whole valley and the glaciers of the surroundings, including the Bernina group.

The house is located 500 meters from the center of Samedan and 800 meters from the station. St. Moritz is only 7 km away. Hiking trails start directly from the house.

A Garage, shared laundry and wi-fi are available to guests.

The apartment, on two levels, has a large living room overlooking the valley and the surrounding mountain range. On the first floor, in addition to the living room, the equipped kitchen and the two terraces, there is the double bedroom with private bathroom, also with direct access to the terrace. An internal staircase leads to the lower floor where there are 2 rooms, one with 1 bunk bed and 1 with 2 bunk beds, both served by a spacious bathroom with bathtub. The lower floor also has an independent entrance door located at level 0 of the building.

VISTA GENERAL

- 3 habitaciones
- máx. 8 personas
- Piso de vacaciones
- 130 m²
- 2 cuartos de baño
- No se admiten animales

EQUIPAMIENTO

- Lavavajillas
- TV
- Internet
- No se admiten animales
- No fumador
- Cocina
- Familiar
- Secador de pelo
- Tostadora
- Nevera
- Ascensor
- Balcón
- Aparcamiento
- Golf

INFORMACIÓN SOBRE LAS HABITACIONES

- 1 habitación
- 2 camas individuales
- 1 habitación
- 1 cama doble
- 1 habitación
- 1 cama doble
- 2 camas individuales
- Habitaciones adicionales
- 2 cuartos de baño















