

Luxury apartment St. Moritz

Switzerland, St. Moritz

Apartment - REF: TGS-A1472



N° Bedrooms: 4	N° Bathrooms: 4	N° People: 8	Parking	M² built: 350 m²	Terrace	Wifi	ski-in/ski-out
Communal pool	Indoor pool	Heated Pool	Fireplace	Sauna	Communal SPA	Dishwasher	TV
Washing machine	Massage room	Ski Room	Distance to lake: 500m	Distance to ski lift: 100m	Distance to centre: central		

Activities in resort

Skiing/Snowboarding Golf Tennis

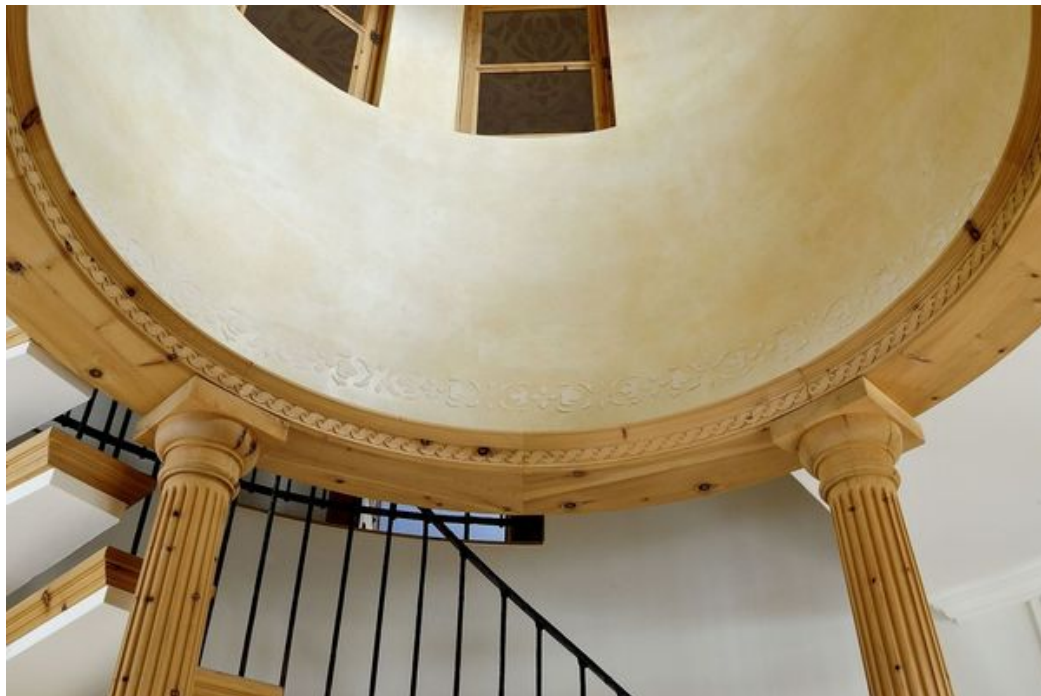
The apartment with three floors of luxury living in one of the most famous hotels in St. Moritz. Central location, stunning views and a luxurious interior.

Located in the very centre of St. Moritz, The apartment overlooks the whole town and lake whilst providing a magnificent view of the surrounding mountainscape. Restaurants, bars, shops and even the ski slopes are all within walking distance of the property. This threestorey luxury residence is able to accommodate eight guests in four en-suite double bedrooms with king-size beds and Italian-style marble bathrooms. The master bedroom even comes with its own hammam.

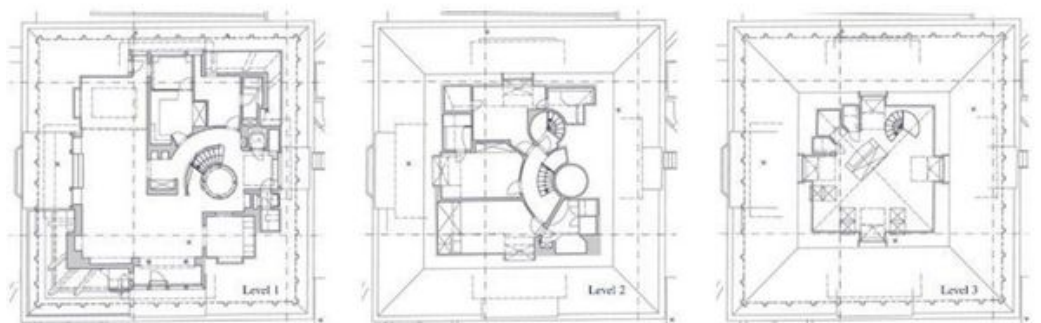
On entering The apartment you will be greeted by a sophisticated yet homely living area with inviting sofas, a fireplace and balcony. There is also an elegant dining room and well-equipped kitchen with breakfast table. A lift delivers you to the three bedrooms on the second floor and the master bedroom on the top floor. Guests staying at The apartment have access to the hotel's fantastic facilities which include a spa with pools, treatment centre, a gym, children's play area and so much more.







GRUNDRISS / FLOOR PLAN



Level 1 (163,42 m ²)	
Foyer	31,31 m ²
Küche	16,94 m ²
Nebenräume	3,43 m ² / 19,62 m ²
Abstellraum	0,95 m ²
Bad	3,74 m ²
Butler-Zimmer	9,00 m ²
Wohnzimmer	78,43 m ²

Level 2 (89,13 m ²)	
Gästezimmer 1	19,10 m ² / Bad 5,40 m ²
Gästezimmer 2	17,91 m ² / Bad 4,29 m ²
Gästezimmer 3	22,59 m ² / Bad 9,08 m ²
Vorraum	10,76 m ²

Level 3 (64,69 m ²)	
Hauptschlafzimmer	55,87 m ²
Bad	8,82 m ²

Total 317,24 m²

Level 1 (163,42 m ²)	
Hall	31,31 m ²
Kitchen	16,94 m ²
Side rooms	3,43 m ² / 19,62 m ²
Storage	0,95 m ²
Bathroom	3,74 m ²
Butler's room	9,00 m ²
Living room	78,43 m ²

Level 2 (89,13 m ²)	
Guest room 1	19,10 m ² / Bathroom 5,40 m ²
Guest room 2	17,91 m ² / Bathroom 4,29 m ²
Guest room 3	22,59 m ² / Bathroom 9,08 m ²
Landing	10,76 m ²

Level 3 (64,69 m ²)	
Master bedroom	55,87 m ²
Bathroom	8,82 m ²

Total 317,24 m²